



# CORE30 CUSTOM PUMPER

FIRETRUCKS.COM

A proven track record of durability/reliability and the specs you need most. All with an industry-leading 3-year warranty with short build time at a very competitive price point.



## A CUSTOM PUMPER – FASTER

The **CORE30** is a workhorse that strikes a unique balance of performance, price and availability.

Configured to meet the needs of fire districts, large or small, this engine is available on two chassis – the 1871 and Spectr II – which offer new safety, suspension and ergonomic features





# CORE30 ON THE SPECTR II CHASSIS

The CORE30 on the Spectr II Chassis is Available in Eight Cab Configurations.



One-piece Windshield for Maximum Visibility: (3,150 sq. in.). Traditional Ladders (On the Side).



Cab Height: 9' 7"



Cab Length: 32' 8"



Tool Board Mounting



Low Crosslays



# CORE30 ON THE SPECTR II CHASSIS



Heavy-duty Floor Mounted Pullout Trays



Available With or Without Coffin Compartments



Compartment Space: 301.5 cu. ft.



# CORE30 ON THE 1871 CHASSIS

The CORE30 on the 1871 Chassis is Available in Ten Cab Configurations.



Available as a Top-mount or Side-mount



Available With or Without Coffin Compartments



Compartment Space: 270.1 cu. ft.



## PUMP MODULE OPTIONS

Available with Hale, Darley or Waterous (Brushed Stainless Steel | Powder Coated Black | Lynx)



SAM Pump Module by IDEX



Side-Mount Pump Module (Waterous)



Side-Mount Pump Module (Hale)



# SPECTR II CHASSIS: CAB CONFIGURATIONS AND OPTIONS



**2024 MY Upgrades Improve Ergonomics, Safety, Ease of Use and Serviceability Throughout the Cab.**



**New Fascia and Lighting Options | Steering Wheel Redesign | Upgraded and Relocated Switch Panels**

## Chassis: Spectr II

- ◆ **Cab:** LFD or MFDxl (Flat or 12" Raised)
- ◆ **Doors:** Barrier or Full
- ◆ **Powertrain:** Cummins L9 (400 – 450 HP) or X12 (455 – 525 HP) or X15 (605 HP)
- ◆ **Pump:** SAM by IDEX, Hale Qmax or Waterous (1500 GPM)
- ◆ **Tank:** 1,000 Gallons (Total Fluids)
- ◆ **Seating:** Up to Six
- ◆ **Collision Mitigation:** 4Front Airbags and RollTek System
- ◆ **Collision Avoidance:** HAAS Alert
- ◆ **Foam:** FoamPro 2001
- ◆ **Front Suspension:** Reyco Graning IFS With Air-Ride, STEERTEK NXT or Conventional Leaf
- ◆ **Rear Suspension:** Conventional Spring or Air-Ride
- ◆ **Bumper:** 12", 21" or 24" Extended
- ◆ **Ladders:** Through the Tank (Horizontal)
- ◆ **Frame:** Galvanized or Painted

## CUSTOM CAB CONFIGURATIONS

Medical cabinets available in multiple locations.



Dual Access Medical Cabinets



Cab Interior Lighting Upgraded for MY 2024 (Not Featured Above)





# 1871 CHASSIS: CAB CONFIGURATIONS AND OPTIONS



## Chassis: 1871

- ◆ **Cab:** LFD or MFDxl (Flat or 12" Raised)
- ◆ **Doors:** Barrier or Full
- ◆ **Powertrain:** Cummins L9 (400 – 450 HP) or X12 (455 – 525 HP) or X15 (605 HP)
- ◆ **Pump:** SAM by IDEX, Hale, Darley or Waterous (1500 GPM)
- ◆ **Tank:** 1,000 Gallons (Total Fluids)
- ◆ **Seating:** Up to Six
- ◆ **Collision Mitigation:** 4Front Airbags and RollTek System
- ◆ **Collision Avoidance:** HAAS Alert
- ◆ **Foam:** FoamPro 2001
- ◆ **Front Suspension:** Reyco Granning IFS with Air-Ride, STEERTEK NXT or Conventional Leaf
- ◆ **Rear Suspension:** Conventional Spring or Air-Ride
- ◆ **Bumper:** 12", 21" or 24" Extended
- ◆ **Ladders:** Through the Tank (Horizontal)
- ◆ **Frame:** Galvanized or Painted

## CUSTOM CAB CONFIGURATIONS

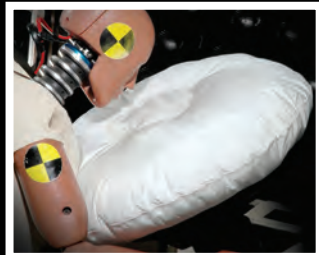


# HME SAFETY SYSTEM



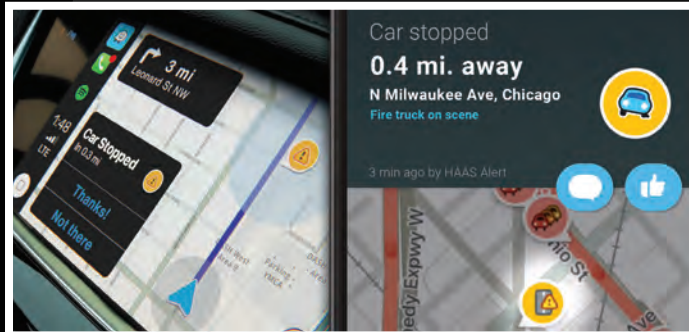
## COLLISION MITIGATION

4Front airbag system (steering wheel, knee and officer's) and RollTek.



## COLLISION AVOIDANCE

HAAS system alerts engineer and officer of approaching emergency vehicles



## CLEAN CAB

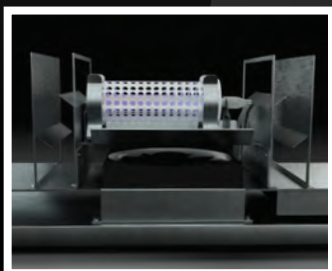
Active air system utilizes PHI cell technology to remove viruses, bacteria and VOCS.



Removable Seat Covers  
Limit Exposure to Fire  
Ground Particulates

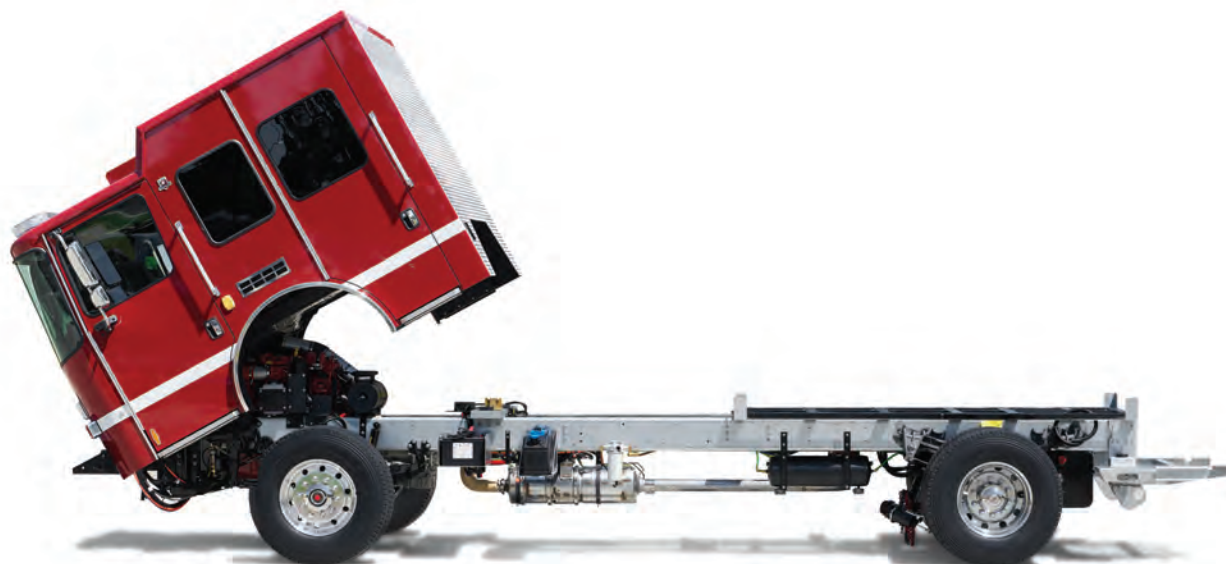


High Performance  
HVAC System (Output: 90,000  
BTUs and 650 CFM)





# CHASSIS OPTIONS



## SUSPENSION OPTIONS

Other suspension options are available. See your HME authorized dealer for details.

### REYCO GRANNING

Independent Front  
Suspension and Air-Ride



### HENDRICKSON FIREMAAX

Air-Ride Rear Suspension



### STEERTEK NXT

Front Suspension (Full  
Parabolic Leaf Pack)



## POWERTRAIN OPTIONS

### CUMMINS X15

605 HP  
Torque: 1850



### CUMMINS X12

455-525 HP  
Torque: 1695-1700



### CUMMINS L9

330-450 HP  
Torque: 1000-1250



HME Ahrens-Fox  
1950 Byron Center Ave SW  
Wyoming, MI 49519  
616.534.1463

[FIRETRUCKS.COM](http://FIRETRUCKS.COM)



**LEARN  
MORE**

