



# CORE07 CUSTOM PUMPER

FIRETRUCKS.COM

A proven track record of durability/reliability and the specs you need most. All with an industry-leading 3-year warranty with short build time at a very competitive price point.



## A CUSTOM PUMPER – FASTER

The **CORE07** is a workhorse that strikes a unique balance of performance, price and availability.

Configured to meet the needs of fire districts, large or small, this engine is available on three chassis – SFO, the 1871 and Spectr II – which offer new safety, suspension and ergonomic features.



# CORE07 ON THE SFO CHASSIS

The CORE07 combines ample compartment space and tank capacity within a compact overall length for maneuverability to manage tight service areas.



**CORE07** compartment space 159.1 cu. ft. or 196.5 cu. ft. (with coffin compartments)



# CORE07: MULTIPLE CONFIGURATION OPTIONS



Top mount pump location or side mount.

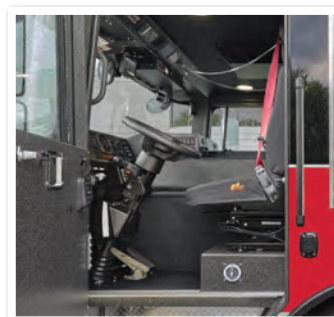


Coffin compartments available to expand storage capacities.



# SPECTR II CHASSIS: CAB CONFIGURATIONS AND OPTIONS

2024 MY upgrades improve ergonomics, safety, ease of use and serviceability throughout the cab.



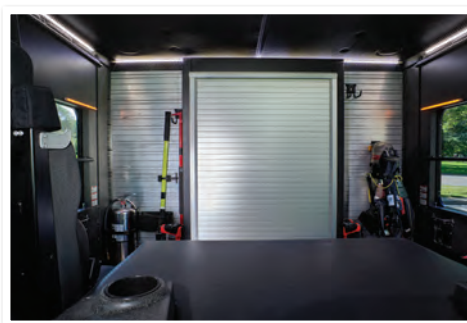
New Fascia and Lighting Options | Steering Wheel Redesign | Upgraded and Relocated Switch Panels

## Chassis: Spectr II

- ◆ Cab: LFD or MFDxl (Flat or 12" Raised)
- ◆ Doors: Barrier or Full
- ◆ Powertrain: Cummins L9 (400 – 450 HP) or X12 (455 – 525 HP) or X15 (605 HP)
- ◆ Pump: SAM by IDEX, Hale Qmax or Waterous (1500 GPM)
- ◆ Tank: 1,000 Gallons (Total Fluids)
- ◆ Seating: Up to Six
- ◆ Collision Mitigation: 4Front Airbags and RollTek System
- ◆ Collision Avoidance: HAAS Alert
- ◆ Foam: FoamPro 2001
- ◆ Front Suspension: Reyco Graning IFS With Air-Ride, STEERTEK NXT or Conventional Leaf
- ◆ Rear Suspension: Conventional Spring or Air-Ride
- ◆ Bumper: 12", 21" or 24" Extended
- ◆ Ladders: Through the Tank (Horizontal)
- ◆ Frame: Galvanized or Painted

## CUSTOM CAB CONFIGURATIONS

Medical cabinets available in multiple locations.



# 1871 CHASSIS: CAB CONFIGURATIONS AND OPTIONS



## Chassis: 1871

- ◆ **Cab:** LFD or MFDxl (Flat or 12" Raised)
- ◆ **Doors:** Barrier or Full
- ◆ **Powertrain:** Cummins L9 (400 – 450 HP) or X12 (455 – 525 HP) or X15 (605 HP)
- ◆ **Pump:** SAM by IDEX, Hale, Darley or Waterous (1500 GPM)
- ◆ **Tank:** 1,000 Gallons (Total Fluids)
- ◆ **Seating:** Up to Six
- ◆ **Collision Mitigation:** 4Front Airbags and RollTek System
- ◆ **Collision Avoidance:** HAAS Alert
- ◆ **Foam:** FoamPro 2001
- ◆ **Front Suspension:** Reyco Granning IFS with Air-Ride, STEERTEK NXT or Conventional Leaf
- ◆ **Rear Suspension:** Conventional Spring or Air-Ride
- ◆ **Bumper:** 12", 21" or 24" Extended
- ◆ **Ladders:** Through the Tank (Horizontal)
- ◆ **Frame:** Galvanized or Painted

## CUSTOM CAB CONFIGURATIONS



# SFO CHASSIS: CAB CONFIGURATIONS AND OPTIONS



Wide doors for easy entry and egress (38.75")



Vinyl ester composite dash and center console for durability

## Chassis: SFO

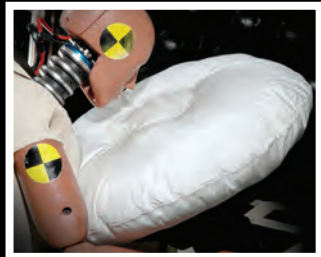
- ◆ **Chassis:** 1871
- ◆ **Cab:** LFD or MFDxl (Flat or 12" Raised)
- ◆ **Doors:** Barrier or Full
- ◆ **Powertrain:** Cummins L9 (330 – 450 HP) or X12 (455 – 525 HP) or X15 (605 HP)
- ◆ **Pump:** SAM By IDEX, Hale, Darley or Waterous (1500 GPM)
- ◆ **Tank:** 1000 Gallons (Total Fluids)
- ◆ **Seating:** Up to Six
- ◆ **Collision Mitigation:** 4Front Airbags and RollTek System
- ◆ **Collision Avoidance:** HAAS Alert
- ◆ **Foam:** FoamPro 2001
- ◆ **Front Suspension:** Conventional Leaf
- ◆ **Rear Suspension:** Conventional Spring
- ◆ **Bumper:** 12", 21" or 24" Extended
- ◆ **Ladders:** Through the Tank (Horizontal)
- ◆ **Frame:** Galvanized or Painted

# HME SAFETY SYSTEM



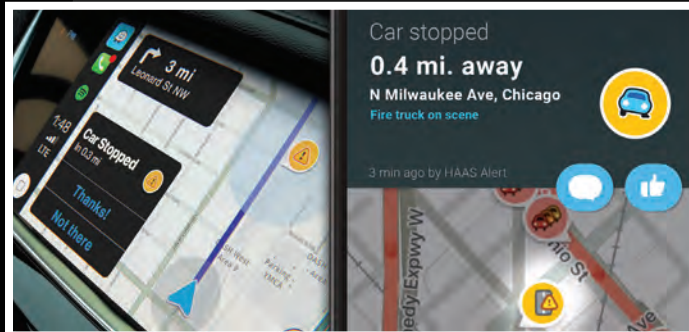
## COLLISION MITIGATION

4Front airbag system (steering wheel, knee and officer's) and RollTek.



## COLLISION AVOIDANCE

HAAS system alerts engineer and officer of approaching emergency vehicles



## CLEAN CAB

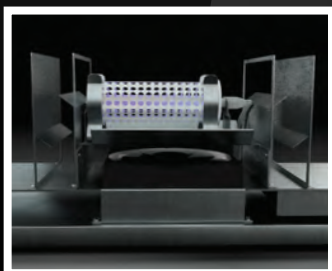
Active air system utilizes PHI cell technology to remove viruses, bacteria and VOCS.



Removable Seat Covers  
Limit Exposure to Fire  
Ground Particulates



High Performance  
HVAC System  
(Output: 90,000 BTUs)



# CHASSIS OPTIONS



## SUSPENSION OPTIONS

Other suspension options are available. See your HME authorized dealer for details.

### REYCO GRANNING

Independent Front Suspension and Air-Ride



### HENDRICKSON FIREMAAX

Air-Ride Rear Suspension



### STEERTEK NXT

Front Suspension (Full Parabolic Leaf Pack)



## POWERTRAIN OPTIONS

### CUMMINS X15

605 HP  
Torque: 1850



### CUMMINS X12

455-525 HP  
Torque: 1695-1700



### CUMMINS L9

330-450 HP  
Torque: 1000-1250



HME Ahrens-Fox  
1950 Byron Center Ave SW  
Wyoming, MI 49519  
616.534.1463

[FIRETRUCKS.COM](http://FIRETRUCKS.COM)



**LEARN  
MORE**

